



*pumping prosperity
pumping dreams*



Performance Chart

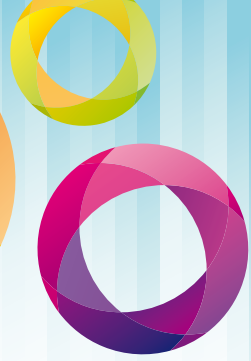


CM/L-7988620



<i>Company</i> Profile	03
<i>V3 Classic</i> Submersible Pumpset	06
<i>V3 Slim</i> Submersible Pumpset	07
<i>V4 Classic</i> Submersible Pumpset	10
<i>V6 Classic S.S.</i> Submersible Pumpset	16
<i>V6 Classic C.I.</i> Submersible Pumpset	18
<i>V7 & V9</i> Openwell Pumpset	24
Technical Details	26





CM/L-7988620

DLP Pumps is a leading enterprise, specialized in production of various water pumps, the company adopts advance computer-aided design to provide an advantageous platform for product technical innovation and is leading in research and development of new products in this industry, DLP Pumps differentiates itself from others by its huge scale, strict and systematic quality, state of the art machinery, strict selection of material used in the pumps.

The company implements ISO 9001:2000 quality management system ensuring 100% conformity of fittings to be warehoused, delivered products are 100% qualified. Rigorous quality management reduced cost of production process, what's more, superior quality also wins trust & favourable comments from customers. DLP Pumps are specially design to perform under various situations and thus giving best results even in the most hostile conditions.

The company carries on the principal of zero tolerance, continuous improvement, grows together with new and frequent customers. In the development vision of quality first, innovating products continuously and innovating quality continuously.

DLP Pumps is steering a steady course towards standardization and specific direction, evolving itself into an advanced water pump manufacturing enterprise with a well known brand presence in the Indian sub-continent.





V3 Submersible Pumpset

DLP V3 Borehole submersible pumps are suitable for 3" or larger boreholes. Utilisation of top class materials allows pumps to be reliable, long lasting & increases wear & tear towards sand. State of the art manufacturing process endures optimum results to satisfy all your pumping needs with less space, less maintenance & complete absence of noise. In all industrial and agricultural applications, where it is required to life water out from below the ground.

Operating Limits

Power range	0.5 HP to 1.25 HP 160V / 240V, 50Hz AC Single Phase
Speed	2750 RPM
Max. Discharge	85 LPM
Min. Discharge	15 LPM
Max Head	430 ft

Models

V3 Slim - Suitable for 75mm Borewell

V3 Classic - Suitable for 80mm Borewell

Get the maximum advantage by choosing from our range of options.

Construction Material for Motor

Shaft	SS 431 / SS 410
Bearing Bush	Leaded Tin Bronze
Thrust Bearing	Stainless Steel & Teflon
Lower/Upper Housing	C.I. Graded - 200 FG
Stator Shell	Stainless Steel (Heavy Duty)

Construction Material for Pump

Impeller / Diffuser	Noryl - GFN 2-701
Bush	Lead Tin Bronze
Pumpshaft	SS 431 / SS 410
Stainer / Cable Guard	Stainless Steel
Suction Casting	C.I.
Non-Return Valve	C.I.

Features

- Premier manufacturing technology. The innovative mechanical design, combined with the use of an advanced manufacturing technology, results in a state-of-the-art 3-inch submersible pump line.
- Proven & Reliable Design For Critical Conditions.
- Easy assembling, dismantling. Easily serviceable pump & field rewindable motors. Suction screen and coupling are made of stainless steel.
- Standard 2 pole speed motor (2750 RPM).
- Once assembled, each 3" borehole submersible pump is individually tested to assure performance within design specifications.
- DLP Pumps uses non-contaminating, water filled motor design.
- High pumping efficiency for reduced running costs.
- Cost effective pumping systems: The hydraulic design is such as to enhance the efficiency, thus reducing energy consumption and making pumping systems more cost effective.
- Light weight and compact.
- Lip seal and sand guard to prevent ingress of impurities into the motor.
- The simplicity of the assembly concept allows for easy field service without the need of special tools minimizing the system down-time.
- Powered for continuous operation: All horsepower ratings are within the service limits of the motor and pump can be operated continuously without fear of damage to the motor.

go
GREEN





V-3 Noryl Bowl Classic Submersible Pump Set

with Stainless Steel Body Suitable for 80mm Bore Dia.

Model D 302	HP	STG.	Outlet Inch	Phase	Discharge at Duty Point [LPM]								
					0	10	20	30	35	40	43	46	50
D3CL05010	0.50	10	1"	1	51	44	38	34	30	24	21	15	9
D3CL07515	0.75	15	1"	1	75	63	55	51	45	40	37	28	20
D3CL10020	1.00	20	1"	1	102	82	70	65	60	47	40	34	22
D3CL12526	1.25	26	1"	1	133	105	94	77	68	49	41	37	24

Model D 304	HP	STG.	Outlet Inch	Phase	HEAD IN METER	Discharge at Duty Point [LPM]								
						0	15	25	35	45	50	55	60	65
D3CL05006	0.50	6	1"	1	32	25	21	19	18	16	13	11	6	
D3CL07510	0.75	10	1"	1	50	42	37	33	30	27	24	19	14	
D3CL10015	1.00	15	1"	1	75	70	62	50	45	39	32	23	17	
D3CL12520	1.25	20	1"	1	102	89	82	72	60	48	41	27	21	

Model D 305	HP	STG.	Outlet Inch	Phase	HEAD IN METER	Discharge at Duty Point [LPM]								
						0	25	35	45	55	60	75	80	85
D3CL07507	0.75	7	1"	1	36	32	27	23	21	18	16	13	7	
D3CL10008	1.00	8	1"	1	42	37	29	26	24	21	17	15	10	
D3CL10010	1.00	10	1"	1	50	41	36	33	30	26	22	19	14	
D3CL12515	1.25	15	1"	1	75	67	60	46	45	41	36	31	26	



V-3 Noryl Bowl Slim Submersible Pump Set

with Stainless Steel Body. Pump OD 68mm

Model D 305	HP	STG.	Outlet Inch	Phase	Discharge at Duty Point [LPM]								
					0	15	25	35	45	50	55	60	65
D3SL05010	0.50	10	1.25"	1	45	37	32	26	20	16	14	11	5
D3SL07512	0.75	12	1.25"	1	53	45	39	32	24	20	17	13	8

Model D 307	HP	STG.	Outlet Inch	Phase	HEAD IN METER	Discharge at Duty Point [LPM]								
						0	25	35	45	65	70	75	80	85
D3SL07510	0.75	10	1.25"	1	HEAD IN METER	43	36	32	26	20	15	12	8	6
D3SL10015	1.00	15	1.25"	1		62	52	45	37	30	26	22	18	8
D3SL12520	1.25	20	1.25"	1		80	70	62	55	40	29	20	16	7

Model D 310	HP	STG.	Outlet Inch	Phase	HEAD IN METER	Discharge at Duty Point [LPM]								
						0	35	45	55	75	85	95	105	110
D3SL10010	1.00	10	1.25"	1	HEAD IN METER	42	31	28	25	20	16	12	9	7
D3SL10012	1.00	12	1.25"	1		50	37	34	30	24	21	15	12	9
D3SL12515	1.25	15	1.25"	1		63	50	43	36	30	25	19	15	11

Single Phase Relay Contactor Startor Panel

Sr.No.	H.P.	Voltage Range	Start Capacitor	Required Run Capacitor
1	0.50	180 - 240 Standard Volt	80 - 100	36 MFD
		130 - 170 Low Volt	80 - 100	36 MFD
2	0.75	180 - 240 Standard Volt	100 - 120	36 MFD
		130 - 170 Low Volt	100 - 120	36 + 15 MFD
3	1.00	180 - 240 Standard Volt	120 - 150	36 + 15 MFD
		130 - 170 Low Volt	120 - 150	36 + 25 MFD
4	1.50	180 - 240 Standard Volt	150 - 200	36 + 36 MFD
		130 - 170 Low Volt	150 - 200	36 + 36 MFD
5	2.00	180 - 240 Standard Volt	200 - 250	36 + 36 MFD
		130 - 170 Low Volt	200 - 250	36 + 50 MFD
6	3.00	180 - 240 Standard Volt	200 - 250	50 + 50 MFD
		130 - 170 Low Volt	200 - 250	50 + 50 + 36 MFD





V4 Submersible Pumpset

DLP V4 Pumps are specially designed with radial or mixed flow impellers. Borehole submersible pumps for wells from 3 to 10 inches wells, with 2-pole electric motors. The most complete range of submersible borehole electric pumps to meet all your borehole pumping applications suitable to replace standard surface pumps, carrying the advantages of lesser space needed, less maintenance and complete absence of noise. In all domestic, industrial and agricultural applications, where it is required to life water out from below the ground.

Operating Limits

Power range	0.5 HP to 5 HP 160V / 240V, 50Hz Single Phase 350V to 440V, Three Phase
Speed	2850 RPM
Max. Discharge	450 LPM
Min. Discharge	20 LPM
Max Head	800 ft

Models

V4 Classic - Suitable for 100mm Borewell

Get the maximum advantage by choosing from our range of options.

Construction Material for Motor

Shaft	SS 431 / SS 410
Bearing Bush	Leaded Tin Bronze
Thrust Bearing	Stainless Steel & Teflon
Lower/Upper Housing	C.I. Graded - 200 FG
Stator Shell	Stainless Steel (Heavy Duty)

Construction Material for Pump

Impeller / Diffuser	Noryl - GFN 2-701
Bush	Lead Tin Bronze
Pumpshaft	SS 431 / SS 410
Stainer / Cable Guard	Stainless Steel
Suction Casting	C.I.
Non-Return Valve	C.I.

Features

- Premier manufacturing technology. The innovative mechanical design, combined with the use of an advanced manufacturing technology, results in a state-of-the-art 4-inch submersible pump line.
- Proven & Reliable Design For Critical Conditions.
- Easy assembling, dismantling. Easily serviceable pump & field rewindable motors. Suction screen and coupling are made of stainless steel.
- Standard 2 pole speed motor (2850 RPM).
- Once assembled, each 4" borehole submersible pump is individually tested to assure performance within design specifications.
- DLP Pumps uses non-contaminating, water filled motor design.
- High pumping efficiency for reduced running costs.
- Cost effective pumping systems: The hydraulic design is such as to enhance the efficiency, thus reducing energy consumption and making pumping systems more cost effective.
- Light weight and compact.
- Lip seal and sand guard to prevent ingress of impurities into the motor.
- The simplicity of the assembly concept allows for easy field service without the need of special tools minimizing the system down-time.
- Powered for continuous operation: All horsepower ratings are within the service limits of the motor and pump can be operated continuously without fear of damage to the motor.

go
GREEN





V-4 Radial Flow Classic Submersible Pump Set with Stainless Steel Body Suitable for 100mm Bore Dia.

Model D 401	KW/HP	STG.	Out- let Inch	Phase	HEAD IN METER	Discharge at Duty Point [LPM]								
						0	20	25	30	45	50	55	60	65
D41C05010	0.37/0.5	10	1"	1		63	54	50	46	40	34	28	18	10
D41C07515	0.55/0.75	15	1"	1		95	90	85	75	60	52	45	32	16
D41C10018	0.75/1.0	18	1"	1		112	104	93	80	72	57	49	34	18
D41C10020	0.75/1.0	20	1"	1		125	118	110	101	80	62	54	38	22
D41C10025	0.75/1.0	25	1"	1		140	126	112	103	85	63	56	39	23
D41C15025	1.1/1.5	25	1"	1 & 3		154	143	133	118	100	73	58	45	25
D41C20030	1.5/2.0	30	1"	1 & 3		185	165	150	135	120	100	80	60	40
D41C30035	2.2/3.0	35	1"	1 & 3		212	185	168	160	140	128	107	79	67

Model D 402	KW/HP	STG.	Out- let Inch	Phase	HEAD IN METER	Discharge at Duty Point [LPM]								
						0	30	40	50	55	60	65	70	75
D41C05007	0.37/0.5	7	1"	1		46	37	32	30	28	24	22	18	12
D41C07510	0.55/0.75	10	1"	1		66	58	50	46	40	30	25	20	15
D41C07512	0.55/0.75	12	1"	1		75	63	58	53	48	41	34	30	26
D41C10015	0.75/1.0	15	1"	1		94	80	73	66	60	47	41	30	24
D41C15018	1.1/1.5	18	1"	1		116	100	88	80	72	54	43	35	26
D41C15020	1.1/1.5	20	1"	1 & 3		126	107	96	87	80	60	44	37	28
D41C15022	1.1/1.5	22	1"	1 & 3		145	120	103	94	88	70	56	43	32
D41C20025	1.5/2.0	25	1"	1 & 3		152	133	120	110	100	92	77	60	40
D41C30030	2.2/3.0	30	1"	1 & 3		184	156	137	129	120	113	102	84	68
D41C40035	3.0/4.0	35	1"	3		210	172	168	152	140	114	107	81	73
D41C50040	3.7/5.0	40	1"	3		240	195	180	171	160	120	109	80	74



V-4 Radial Flow Classic Submersible Pump Set

with Stainless Steel Body Suitable for 100mm Bore Dia.

Model D 404	KW/HP	STG.	Out- let Inch	Phase	HEAD IN METER	Discharge at Duty Point [LPM]								
						0	45	55	65	80	90	100	110	120
D41C05005	0.37/0.5	5	1.25"	1	HEAD IN METER	35	30	25	23	20	17	15	12	7
D41C07508	0.55/0.75	8	1.25"	1		52	44	40	36	32	24	20	14	9
D41C10010	0.75/1.0	10	1.25"	1		66	62	54	47	40	33	24	17	12
D41C10012	0.75/1.0	12	1.25"	1		79	64	57	53	48	40	30	22	19
D41C15015	1.1/1.5	15	1.25"	1 & 3		94	82	74	68	60	49	35	27	21
D41C20018	1.5/2.0	18	1.25"	1 & 3		118	93	88	80	72	54	40	33	25
D41C20020	1.5/2.0	20	1.25"	1 & 3		125	100	92	83	80	56	41	35	28
D41C30025	2.2/3.0	25	1.25"	1 & 3		156	140	127	113	100	77	54	39	31
D41C40030	3.0/4.0	30	1.25"	3		175	167	160	147	120	93	64	42	35
D41C50035	3.7/5.0	35	1.25"	3		214	182	166	151	140	105	70	45	37

Model D 405	KW/HP	STG.	Out- let Inch	Phase	HEAD IN METER	Discharge at Duty Point [LPM]								
						0	50	70	90	102	122	144	166	177
D41C07506	0.55/0.75	6	1.5"	1	HEAD IN METER	38	32	28	26	24	21	16	11	6
D41C10008	0.75/1.0	8	1.5"	1		50	45	40	36	32	27	21	13	8
D41C15012	1.1/1.5	12	1.5"	1 & 3		75	64	57	53	48	36	30	20	10
D41C20015	1.5/2.0	15	1.5"	1 & 3		94	87	77	68	60	48	36	27	15
D41C30018	2.2/3.0	18	1.5"	1 & 3		112	105	89	79	72	54	41	30	17
D41C30020	2.2/3.0	20	1.5"	1 & 3		126	110	100	88	80	64	45	33	19
D41C40025	3.0/4.0	25	1.5"	3		150	118	107	103	97	68	49	38	22
D41C50025	3.7/5.0	25	1.5"	3		154	119	110	107	100	69	53	42	24
D41C50030	3.7/5.0	30	1.5"	3		183	150	143	120	111	77	59	45	31

Model D 407	KW/HP	STG.	Out- let Inch	Phase	HEAD IN METER	Discharge at Duty Point [LPM]								
						0	60	80	100	125	135	155	175	195
D41C10006	0.75/1.0	6	1.5"	1	HEAD IN METER	40	34	31	27	24	21	18	12	7
D41C15010	1.1/1.5	10	1.5"	1 & 3		66	60	54	49	40	37	21	16	10
D41C20012	1.5/2.0	12	1.5"	1 & 3		75	64	57	53	48	39	33	20	14
D41C30015	2.2/3.0	15	1.5"	1 & 3		97	80	72	66	60	50	39	29	17
D41C40020	3.0/4.0	20	1.5"	3		118	112	100	89	80	62	47	39	25



V-4 Radial Flow Classic Submersible Pump Set

with Stainless Steel Body Suitable for 100mm Bore Dia.

Model D 410	KW/HP	STG.	Outlet Inch	Phase	HEAD IN METER	Discharge at Duty Point [LPM]								
						0	85	105	125	150	170	190	200	210
D41C10005	0.75/1.0	5	2"	1		32	28	24	22	20	16	13	10	7
D41C15008	1.1/1.5	8	2"	1 & 3		52	45	40	36	32	22	16	11	9
D41C20010	1.5/2.0	10	2"	1 & 3		65	57	50	45	40	30	26	17	12
D41C30012	2.2/3.0	12	2"	1 & 3		78	66	60	52	48	36	29	20	15
D41C40018	3.0/4.0	18	2"	3		107	90	78	76	72	47	36	27	20
D41C50020	3.7/5.0	20	2"	3		120	112	92	85	80	56	43	30	26

Model DQ 412	KW/HP	STG.	Outlet Inch	Phase	HEAD IN METER	Discharge at Duty Point [LPM]								
						0	100	120	140	165	180	200	220	240
D41C10004	0.75/1.0	4	2"	1 & 3		27	21	19	18	16	14	12	10	5
D41C15006	1.1/1.5	6	2"	1 & 3		40	32	29	26	24	20	17	12	7
D41C20008	1.5/2.0	8	2"	1 & 3		42	38	36	34	32	26	23	16	10
D41C30010	2.2/3.0	10	2"	1 & 3		65	57	49	45	40	30	25	15	11
D41C40015	3.0/4.0	15	2"	3		91	70	67	64	60	55	45	22	17
D41C50016	3.7/5.0	16	2"	3		98	75	71	66	64	58	49	25	21

Model DQ 418	KW/HP	STG.	Outlet Inch	Phase	HEAD IN METER	Discharge at Duty Point [LPM]								
						0	100	150	275	305	330	360	390	420
D41C20005	1.5 / 2.0	5	2"	1 & 3		27	24	21	18	15	13	10	7	3
D41C30007	2.2 / 3.0	7	2"	1 & 3		38	33	28	22	21	17	14	9	6
D41C30008	2.2 / 3.0	8	2"	1 & 3		42	37	33	26	24	20	16	12	9
D41C40010	3.0 / 4.0	10	2"	3		51	42	39	27	30	26	19	15	13
D41C50012	3.7 / 5.0	12	2"	3		62	56	50	39	36	30	24	21	18



Single Phase Relay Contactor Startor Panel

Sr.No.	H.P.	Voltage Range	Start Capacitor	Required Run Capacitor
1	0.50	180 - 240 Standard Volt	80 -100	36 MFD
		130 - 170 Low Volt	80 -100	36 MFD
2	0.75	180 - 240 Standard Volt	100 - 120	36 MFD
		130 - 170 Low Volt	100 - 120	36 + 15 MFD
3	1.00	180 - 240 Standard Volt	120 - 150	36 + 15 MFD
		130 - 170 Low Volt	120 - 150	36 + 25 MFD
4	1.50	180 - 240 Standard Volt	150 - 200	36 + 36 MFD
		130 - 170 Low Volt	150 - 200	36 + 36 MFD
5	2.00	180 - 240 Standard Volt	200 - 250	36 + 36 MFD
		130 - 170 Low Volt	200 - 250	36 + 50 MFD
6	3.00	180 - 240 Standard Volt	200 - 250	50 + 50 MFD
		130 - 170 Low Volt	200 - 250	50 + 50 + 36 MFD

Required 3 Core Coper Flat Cable for S.P. / T.P. Model

0.5 H.P.	0.75 H.P.	1.0 H.P.	1.5 H.P.	2 H.P.	3 H.P.	4 H.P.	5 H.P.
1.5mm ²	1.5mm ²	S.P. 2.5mm ²	S.P. 2.5mm ²	S.P. 2.5mm ²	S.P. 2.5mm ²	-	
-	-	T.P. 1.5mm ²	T.P. 1.5mm ²	T.P. 2.5mm ²	T.P. 2.5mm ²	T.P. 2.5mm ²	T.P. 2.5mm ²



V6 S.S. Submersible Pumpset

DLP V6 Borehole submersible pumps are suitable for 6" or larger boreholes. Utilisation of top class materials allows pumps to be reliable, long lasting & increases wear & tear towards sand. State of the art manufacturing process endures optimum results to satisfy all your pumping needs with less space , less maintenance & complete absence of noise. In all industrial and agricultural applications, where it is required to life water out from below the ground.

Operating Limits

Power Range	5HP to 15 HP 350V / 440V ,50 Hz AC Three Phase Star & Delta Connections
Speed	2880 RPM
Max Discharge	1100 LPM
Min Discharge	63 LPM
Max Head	1200 ft

Models

V6 S.S. Classic - Suitable for 150mm Borewell
Get the maximum advantage by choosing from our range of options.

Construction Material for Motor

Shaft	SS 431 / SS 410
Bearing Bush	Leaded Tin Bronze
Thrust Bearing	Stainless Steel & Teflon
Lower/Upper Housing	C.I. Graded - 200 FG
Stator Shell	Stainless Steel (Heavy Duty)

Construction Material for Pump

Impeller / Diffuser	Stainless Steel
Bush	Lead Tin Bronze
Pumpshaft	SS 431 / SS 410
Stainer / Cable Guard	Stainless Steel
Suction Casting	C.I.
Non-Return Valve	C.I.

Features

- Premier manufacturing technology. The innovative mechanical design, combined with the use of an advanced manufacturing technology, results in a state-of-the-art 6-inch submersible pump line.
- Proven & Reliable Design For Critical Conditions.
- Easy assembling, dismantling. Easily serviceable pump & field rewindable motors. Suction screen and coupling are made of stainless steel.
- Standard 2 pole speed motor (2880 RPM).
- Once assembled, each 6" borehole submersible pump is individually tested to assure performance within design specifications.
- DLP Pumps uses non-contaminating, water filled motor design.
- High pumping efficiency for reduced running costs.
- Cost effective pumping systems: The hydraulic design is such as to enhance the efficiency, thus reducing energy consumption and making pumping systems more cost effective.
- Light weight and compact.
- Lip seal and sand guard to prevent ingress of impurities into the motor.
- The simplicity of the assembly concept allows for easy field service without the need of special tools minimizing the system down-time.
- Powered for continuous operation: All horsepower ratings are within the service limits of the motor and pump can be operated continuously without fear of damage to the motor.

go
GREEN





V-6 Classic S. S. Submersible Pump Set
with Stainless Steel Body Suitable for 150mm Bore Dia.
Head 50ft. per Stage

V-6 60 Radial Flow with SS Bowl & SS Impeller

Three Phase at 415 Volt 50 Hz

Discharge in L.P.M.					80	90	100	110	120	135	150	160	170	180
Sr. No.	Model	H.P.	STG	Outlet Inch	Total Head in Meters									
1	D6060001	5.00	8	2.5"	120	116	110	105	100	92	84	76	68	63
2	D6060002	6.00	10	2.5"	147	140	136	131	126	121	110	102	95	84
3	D6060003	7.50	12	2.5"	170	168	163	155	150	145	133	126	109	100
4	D6060004	10.00	16	2.5"	225	220	217	208	202	195	181	168	146	131
5	D6060005	12.50	20	2.5"	285	280	270	263	252	245	228	210	184	168
6	D6060006	15.00	24	2.5"	341	336	325	315	302	289	273	252	221	200

V-6 80 Radial Flow with SS Bowl & SS Impeller

Three Phase at 415 Volt 50 Hz

Discharge in L.P.M.					120	140	160	180	200	220	240	260	280	300
Sr. No.	Model	H.P.	STG	Outlet Inch	Total Head in Meters									
7	D6080007	5.00	6	2.5"	90	87	84	81	76	70	63	56	48	41
8	D6080008	6.00	8	2.5"	105	102	98	94	88	82	74	65	56	47
9	D6080009	7.50	10	2.5"	150	145	140	135	126	118	105	92	80	67
10	D6080010	10.00	12	2.5"	180	174	168	162	151	141	126	111	96	81
11	D6080011	12.50	15	2.5"	225	217	210	203	189	176	158	139	120	101
12	D6080012	15.00	18	2.5"	270	261	252	224	220	211	189	167	144	122

V-6 100 Radial Flow with SS Bowl & SS Impeller

Three Phase at 415 Volt 50 Hz

Discharge in L.P.M.					120	150	195	210	230	240	250	275	300	325
Sr. No.	Model	H.P.	STG	Outlet Inch	Total Head in Meters									
13	D6100013	5.00	5	2.5"	79	74	68	65	63	60	58	52	47	42
14	D6100014	6.00	6	2.5"	89	84	79	76	73	70	68	63	58	50
15	D6100015	7.50	8	2.5"	121	113	109	103	100	94	89	84	74	68
16	D6100016	10.00	10	2.5"	152	145	137	131	126	121	105	100	94	84
17	D6100017	12.50	12	2.5"	184	173	163	158	151	142	136	120	110	99
18	D6100018	15.00	15	2.5"	231	215	205	197	189	178	168	157	141	126



V-6 Classic S.S. Submersible Pump Set

with Stainless Steel Body Suitable for 150mm Bore Dia.

Head 50ft. per Stage

V-6 125 Radial Flow with SS Bowl & SS Impeller

Three Phase at 415 Volt 50 Hz

Discharge in L.P.M.					180	220	260	280	300	350	375	400	425	450
Sr. No.	Model	H.P.	STG	Outlet Inch	Total Head in Meters									
19	D6125019	5.00	4	2.5"	61	58	56	54	52	49	45	44	42	40
20	D6125020	6.00	5	2.5"	77	72	70	68	66	60	57	55	52	50
21	D6125021	7.50	6	2.5"	92	87	84	81	79	74	68	66	63	61
22	D6125022	10.00	8	2.5"	123	116	112	108	105	98	91	87	84	81
23	D6125023	12.50	10	2.5"	153	145	140	135	131	123	113	109	105	101
24	D6125024	15.00	12	2.5"	184	173	168	163	158	147	137	131	126	121

V-6 150 Radial Flow with SS Bowl & SS Impeller

Three Phase at 415 Volt 50 Hz

Discharge in L.P.M.					300	325	350	375	400	425	450	475	500	525
Sr. No.	Model	H.P.	STG	Outlet Inch	Total Head in Meters									
25	D6150025	5.00	3	2.5"	41	40	38	37	35	34	32	30	28	24
26	D6150026	6.00	4	2.5"	55	53	50	48	46	44	42	40	38	36
27	D6150027	7.50	5	2.5"	68	66	63	61	58	56	53	50	47	41
28	D6150028	10.00	7	2.5"	96	92	88	85	81	78	74	70	66	58
29	D6150029	12.50	8	2.5"	109	105	101	97	92	88	84	80	76	65
30	D6150030	15.00	10	2.5"	137	131	126	121	116	110	105	100	95	82

V-6 200 Radial Flow with SS Bowl & SS Impeller

Three Phase at 415 Volt 50 Hz

Discharge in L.P.M.					250	300	350	400	450	500	550	600	650	700
Sr. No.	Model	H.P.	STG	Outlet Inch	Total Head in Meters									
31	D6200031	6.00	3	2.5"	48	47	45	43	39	35	32	26	18	10
32	D6200032	7.50	4	2.5"	64	62	59	57	53	46	42	35	24	12
33	D6200033	10.00	5	2.5"	81	78	75	71	66	58	53	42	32	15
34	D6200034	12.50	6	2.5"	97	92	89	84	78	69	63	53	37	18
35	D6200035	15.00	8	2.5"	126	123	118	111	102	92	84	68	47	23



V6 CI Submersible Pumpset

DLP V6 Borehole submersible pumps are suitable for 6” or larger boreholes. Utilisation of top class materials allows pumps to be reliable, long lasting & increases wear & tear towards sand. State of the art manufacturing process endures optimum results to satisfy all your pumping needs with less space, less maintenance & complete absence of noise. In all industrial and agricultural applications, where it is required to life water out from below the ground.

Operating Limits

Power range	5 HP to 15 HP 350V / 440V, 50Hz AC Three Phase
Speed	2880 RPM
Max. Discharge	900 LPM
Min. Discharge	115 LPM
Max Head	1100 ft

Models

V6 C.I. Classic - Suitable for 150mm Borewell.
Get the maximum advantage by choosing from our range of options.

Construction Material for Motor

Shaft	SS 431 / SS 410
Bearing Bush	Leaded Tin Bronze
Thrust Bearing	Stainless Steel & Teflon
Lower/Upper Housing	C.I. Graded - 200 FG
Stator Shell	Stainless Steel (Heavy Duty)

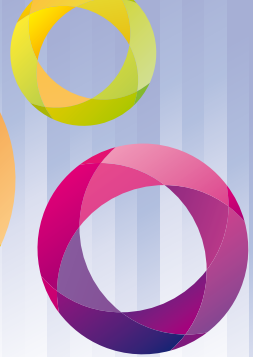
Construction Material for Pump

Impeller / Diffuser	Nylon - 66 Impeller
Bush	Lead Tin Bronze / Rubber
Pumpshaft	SS 431 / SS 410
Stainer / Cable Guard	Stainless Steel
Suction Casting	C.I.
Non-Return Valve	C.I.

Features

- Premier manufacturing technology. The innovative mechanical design, combined with the use of an advanced manufacturing technology, results in a state-of-the-art 6-inch submersible pump line.
- Proven & Reliable Design For Critical Conditions.
- Easy assembling, dismantling. Easily serviceable pump & field rewindable motors. Suction screen and coupling are made of stainless steel.
- Standard 2 pole speed motor (2880 RPM).
- Once assembled, each 6” borehole submersible pump is individually tested to assure performance within design specifications.
- DLP Pumps uses non-contaminating, water filled motor design.
- High pumping efficiency for reduced running costs.
- Cost effective pumping systems: The hydraulic design is such as to enhance the efficiency, thus reducing energy consumption and making pumping systems more cost effective.
- Light weight and compact.
- Lip seal and sand guard to prevent ingress of impurities into the motor.
- The simplicity of the assembly concept allows for easy field service without the need of special tools minimizing the system down-time.
- Powered for continuous operation: All horsepower ratings are within the service limits of the motor and pump can be operated continuously without fear of damage to the motor.





go
GREEN





V-6 Classic C.I. Submersible Pump Set

C.I. Pump Suitable for 150mm Bore Dia.

V-6 60 Radial Flow with C.I. Bowl, Noryl Difuser & Nylon-66 Impeller

Three Phase at 415 Volt 50 Hz

Discharge in L.P.M.					115	130	150	170	185	195	210	220	230
Sr. No.	Model	H.P.	STG	Outlet Inch	Total Head in Meters								
1	D6060001	5.00	8	2"	111	103	92	82	70	60	50	39	28
2	D6060002	6.00	10	2"	130	120	105	92	82	71	56	45	30
3	D6060003	7.50	12	2"	155	145	131	112	100	87	71	58	40
4	D6060004	10.00	16	2"	218	207	184	158	139	122	98	80	57
5	D6060005	12.50	20	2"	273	257	231	200	174	155	127	102	71
6	D6060006	15.00	24	2"	331	313	278	247	212	189	152	121	86

V-6 80 Radial Flow with C.I. Bowl, Noryl Difuser & Nylon-66 Impeller

Three Phase at 415 Volt 50 Hz

Discharge in L.P.M.					170	195	220	250	275	295	300	315	325
Sr. No.	Model	H.P.	STG	Outlet Inch	Total Head in Meters								
7	D6080007	5.00	6	2"	79	69	61	50	40	29	27	19	9
8	D6080008	6.00	8	2"	91	84	74	65	47	35	32	21	11
9	D6080009	7.50	10	2"	133	121	103	84	67	49	44	28	17
10	D6080010	10.00	12	2"	158	142	121	100	79	58	53	36	19
11	D6080011	12.50	15	2"	200	179	152	126	99	74	68	45	25
12	D6080012	15.00	18	2"	242	215	184	152	121	89	82	57	30

V-6 100 Radial Flow with C.I. Bowl, Noryl Difuser & Nylon-66 Impeller

Three Phase at 415 Volt 50 Hz

Discharge in L.P.M.					235	255	280	300	325	350	385	400	410
Sr. No.	Model	H.P.	STG	Outlet Inch	Total Head in Meters								
13	D6100013	5.00	5	2"	68	60	50	40	36	29	24	19	9
14	D6100014	6.00	6	2"	84	74	61	47	44	36	30	23	11
15	D6100015	7.50	8	2"	110	100	79	63	58	47	40	32	15
16	D6100016	10.00	10	2"	139	121	100	79	71	58	47	37	19
17	D6100017	12.50	12	2"	168	147	121	97	87	74	61	47	23
18	D6100018	15.00	15	2"	210	184	152	121	110	90	74	55	29



V-6 Classic C.I. Submersible Pump Set

C.I. Pump Suitable for 150mm Bore Dia.

V-6 125 Radial Flow with C.I. Bowl, Noryl Difuser & Nylon-66 Impeller

Three Phase at 415 Volt 50 Hz

Discharge in L.P.M.					295	310	325	350	375	395	400	420	450
Sr. No.	Model	H.P.	STG	Outlet Inch	Total Head in Meters								
19	D6125019	5.00	4	2"	59	55	50	43	40	35	29	19	10
20	D6125020	6.00	5	2"	76	69	63	55	50	42	37	24	12
21	D6125021	7.50	6	2"	89	80	74	64	60	53	45	30	14
22	D6125022	10.00	8	2"	121	110	100	87	81	71	61	39	19
23	D6125023	12.50	10	2"	152	139	126	110	102	98	75	48	24
24	D6125024	15.00	12	2"	184	168	152	134	124	107	91	60	29

V-6 150 Radial Flow with C.I. Bowl , Noryl Difuser & Nylon-66 Impeller

Three Phase at 415 Volt 50 Hz

Discharge in L.P.M.					330	355	375	400	425	450	475	515	550
Sr. No.	Model	v.P.	STG	Outlet Inch	Total Head in Meters								
25	D6150025	5.00	3	2"	48	44	39	35	27	23	19	14	9
26	D6150026	6.00	4	2"	66	60	53	46	39	32	26	19	12
27	D6150027	7.50	5	2"	84	75	67	61	50	41	33	24	16
28	D6150028	10.00	7	2"	118	105	95	84	69	57	45	34	22
29	D6150029	12.50	8	2"	137	123	107	97	79	66	54	39	26
30	D6150030	15.00	10	2"	170	152	134	121	100	84	66	49	33

V-6 200 Radial Flow with C.I. Bowl , Noryl Difuser & Nylon-66 Impeller

Three Phase at 415 Volt 50 Hz

Discharge in L.P.M.					375	410	450	500	550	615	650	720	775
Sr. No.	Model	H.P.	STG	Outlet Inch	Total Head in Meters								
31	D6200031	6.00	3	2"	45	41	38	35	32	28	22	16	9
32	D6200032	7.50	4	2"	61	55	50	46	42	38	29	21	13
33	D6200033	10.00	5	2"	76	68	63	58	53	47	37	26	16
34	D6200034	12.50	6	2"	90	82	76	69	63	57	44	32	19
35	D6200035	15.00	8	2"	121	109	101	92	84	76	59	42	25



V7 & V9 Openwell Submersible Pumpset

DLP Openwell Submersible Pumps are replacing centrifugal pumps at a number of places because of some of the inherent advantages. Openwell pumps operate at low water levels therefore are widely used in industrial and public water supply schemes and domestic water supplies. It has a long life due to its cast iron construction and water lubricated journals, thrust bearings and bushes which makes the motor withstand wide voltage fluctuations and makes it long lasting.

Models

V7 Mini Openwells

V9 Big Openwells

Get the maximum advantage by choosing from our range of options.

Construction Material for Motor

Shaft - SS 431 / SS 410

Bearing Bush - Leaded Tin Bronze.

Thrust Bearing - Stainless Steel & Teflon

Casing / Impeller / Flange - C.I. Graded - 200 FG.

Stator Shell - Stainless Steel (Heavy duty)

Operating Limits V7 Mini Openwell

Power range	0.5 HP to 3 HP 160V / 240V Horizontal Single Phase
Speed	2895 RPM
Max. Discharge	1100 LPM
Min. Discharge	40 LPM
Max Head	130 ft.

Operating Limits V9 Big Openwell

Power range	3 HP to 7.5 HP 350V / 440V Horizontal Three Phase
Speed	2895 RPM
Max. Discharge	1900 LPM
Min. Discharge	100 LPM
Max Head	160 ft.

Features

- Dynamically balanced rotating parts.
- Flatter efficiency curve for efficient operation.
- Non-overloading power characteristic for safety of motor.
- Replaceable wearing parts.
- No need of priming or foot valve.
- Water shower arrangement for surface application.
- Highly durable water cooled rewindable motor.
- Single shaft for motor ensures permanent correct line alignment.
- Foundation & installation not required.
- Stainless Steel Motor Body.
- Gun Metal bush bearing.
- Noiseless Operation.
- Maintenance free water lubricated bushes.
- Specially designed journal bushes for better cooling effect.
- Designed for wide voltage fluctuations.
- High operating efficiency.
- Wet squirrel cage induction type, water cooled, water lubricated motor. All bearings are water lubricated.



go
GREEN





Horizontal Openwell			V7 Mini Openwells Submersible Pumpset Single Phase Performance Chart																	
SR. NO.	MODEL NO.	KW	H.P.	PIPE SIZE IN MM	TOTAL HEAD IN METERS															
					6	8	10	12	14	16	18	20	22	24	26	28	30	32		
					DISCHARGE IN L.P.M.															
1	DD05-11	0.37	0.50	25 X 25	230	200	180	170	135	105	70	30								
2	DH10-11	0.75	1.00	25 X 25			190	180	175	165	158	147	136	120	112	97	72	40		
3	DH15-15	1.10	1.50	40 X 40			375	365	350	336	330	300	257	228	210	123				
4	DF15-22	1.10	1.50	50 X 50			471	430	400	375	350	315	244	187	111					
5	DH20-15	1.50	2.00	40 X 40		510	470	445	430	390	372	345	315	281	247	230	200	160		
6	DF20-22	1.50	2.00	50 X 50		598	550	540	530	500	470	423	370	330	281	209				
7	DF30-252	2.20	3.00	65 X 50				880	800	770	700	620	565	480	390	310	240			



V9 Big Openwell Submersible Pumpset Three Phase

Performance Chart

TOTAL HEAD IN METERS

SR. NO.	MODEL NO.	KW	H.P.	PIPE SIZE IN MM	TOTAL HEAD IN METERS																		
					5	8	10	12	14	16	18	20	22	24	26	28	30	32	34	36	38	40	
1	DH30-2520	2.2	3.00	65 X 50	800	768	701	616	539	443	415	370	350	315	300	260	200	150					
2	DF30-2525	2.2	3.00	65 X 65	1011	855	800	770	740	720	701	616	539	443	270	160							
3	DH50-2520	3.7	5.00	65 X 50	882	860	838	800	770	750	730	700	660	610	560	490	417	334	241				
4	DF50-2525	3.7	5.00	65 X 65	1150	1134	1123	1090	1070	1041	955	894	823	700	665	400	250						
5	DH75-2520	5.5	7.50	65 X 50	1400	1360	1200	1118	1000	990	940	920	900	870	746	601	512	402	400	370	300	210	
6	DF75-2525	5.5	7.50	65 X 65	1565	1540	1510	1460	1400	1382	1266	1200	1170	1136	1065	975	893	787	615	500	360		



Technical Details

WINDING WIRE

Poly wrapped triple layer winding wire of EC grade copper with high quality insulation, made and tested as per BIS Standard.

ROTOR SHAFT

Rotor shaft is made of single piece SS-410/431 with copper rods. Each rotor is plated for wear resistant and dynamically balanced. Rotor brazing is made with 2% silver brazing rods.

STAMPING

Stamping are made of cold rolled non oriented steel sheets (CRNO) grade M-47 with low watt loss characteristic.

BEARING BUSHES

Bearing bushes are made of leaded tin bronze material (LTB-4) for better lubrication, with super finished internal surface.

SPARES (HARDWARE)

All stainless steel spares i.e. Stud, Nut, Bolt, Screw are made of SS-304 materials.

THRUST BEARING

Thrust bearing's stationary parts made of SS-304 with lapping surface and rotating parts made with high quality engineering stainless steel and carbon.

CASTING PARTS

Motor housing base, Pumps outlet & suction bracket are made of graded CI Casting Painted with Zinc Chrome anti-corrosive primer and finished with auto finish paints.

BOWL & IMPELLER

Bowl & Impeller are made of NORYL with 30% glass filled materials and Bowls are protected with SS inserts for better wear resistance and unbreakable strength.

PUMP COUPLE

Pump couple and motor couple sleeves are made of SS-410.

PUMP & MOTOR SHELL

Pumps and Motor shells are made of SS-431/410 with super finished surface.

PUMP SHAFT

Pump shafts are made of SS-401/304 with super finish surface.

BOWL & IMPELLER FOR SANDY WATER

Bowl and Impeller are made of NORYL with 30% glass filled material but designed to run in sandy water without any wear and tear losses and to avoid problem of jamming due to sand.







DLP Pumps *an ISO 9001:2008 Company*

A Powerful Range of Submersible Pumpsets & Openwells

K1-232 /4/A, G.I.D.C., AJI Industrial Estate,

Rajkot - 360 003. (Gujarat) INDIA

Phone : +91-281-2387621, 2387622

Fax : +91-281-2387623

Email : info@dlppumps.com